

# PricewaterhouseCoopers LLP, Edinburgh

## About PricewaterhouseCoopers LLP

PricewaterhouseCoopers is the UK's leading professional service firm, employing nearly 15,000 staff around the UK and nearly 400 in central Edinburgh. Their clients include public and private companies, central and local Government, lenders and private equity houses, private individuals and not-for-profit organisations.

They provide services in different categories; from assurance and regulatory reporting, business recovery services, through corporate finances, forensic service to human resource services and performance improvement consulting.

They implemented a cycle to work scheme in 2004 . The purpose was to:

- Confirm their commitment to employee health and the environment;
- Increase their attractiveness as an employer; and
- Encourage more staff and contractors to cycle to work.

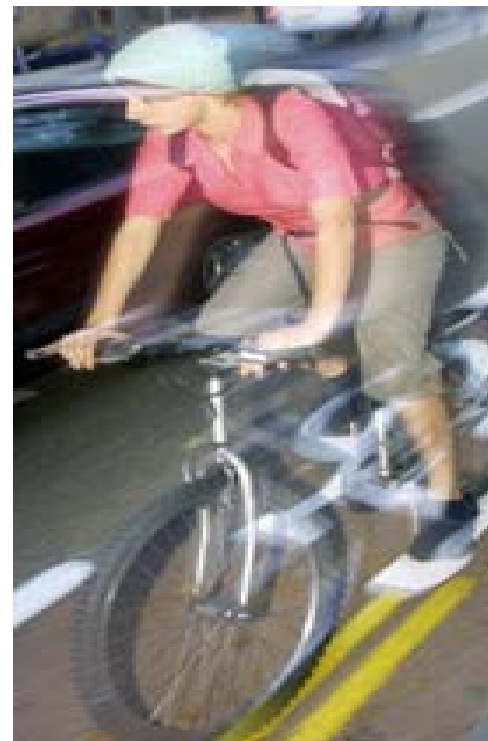
The Edinburgh office, have successfully gained the Cycle Friendly' Award in February 2007, through their efforts to promote cycling to work amongst their staff are seen as a pioneer amongst other PwC offices.

## Implementation and benefits

Most of the funding for the scheme was provided by the PricewaterhouseCoopers with a contribution by the building landlord. The action taken was:

- Improvements to showers;
- Addition of changing areas, cycle parking facilities and storage facilities for equipment and clothing;
- Installation of a work bench for maintenance and minor repairs;

PRICEWATERHOUSECOOPERS 



- Organisation of cycling event with an open access exhibition and advice shop with biking breakfast;
- Led bike rides and cycle commuter training;
- Cycle mileage for business expenses; and
- Internal email group for cyclists.

Benefits from implementation of the cycle to work scheme:

- Greater fitness and therefore health of staff;
- Commitment to improving health and the environment;
- Increased attractiveness as an employer; and
- Greater success in attracting and retaining staff.

They are promoting cycling during bike Week since 2004, mainly by organising an open access exhibition and advice shop. In 2005 company organised a “Cycling with PwC” bike ride that took place from Linlithgow to Edinburgh along the Union Canal.

### **Future plans**

The company will:

- Organise, on the yearly basis, a ‘Getting (Back) into Cycling’ day followed by the Bike Breakfast during Bike Week;
- Upgrade the office guide with more information about cycling, especially for the new members of staff;
- Gain agreement with a local bike shop for the staff discount;
- Review of the off road routes that link into the office and publicise them to staff;
- Additional cycle parking at the basement level;
- Develop DVD to promote cycling to work.

PRICEWATERHOUSECOOPERS &

